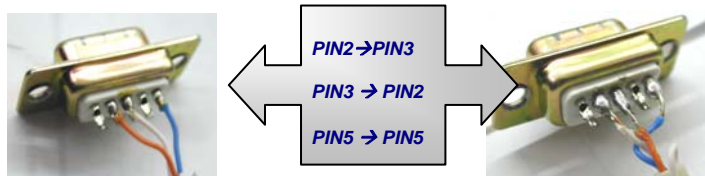
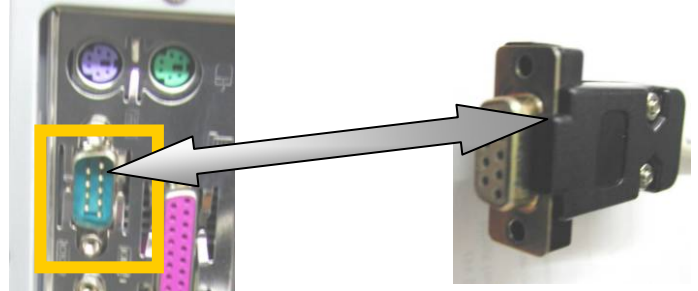


Update Procedure MAX T180 / MAX C130

➤ Upgrade from PC to receiver with RS-232:

Needed material:

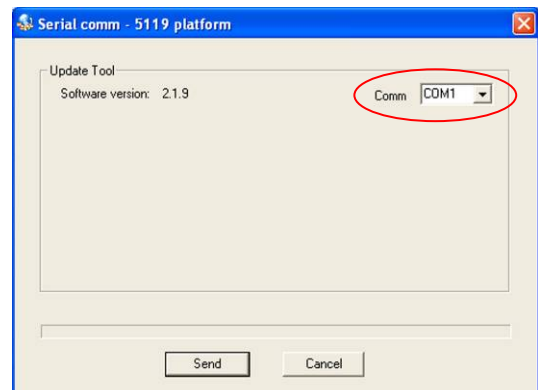
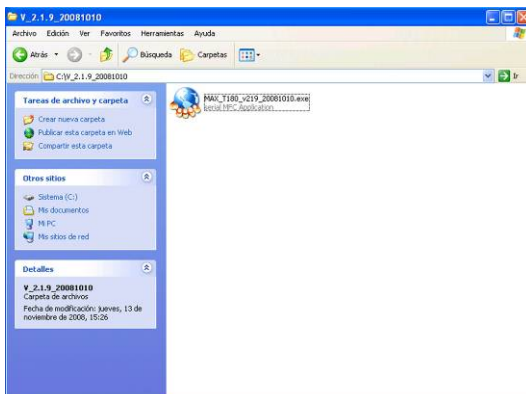
- New firmware for the receiver, downloaded from www.ftemaximal.com.
- PC with Serial Port COM.
- Operating System Windows XP or VISTA.
- Serial Port cable "NULL MODEM".



Software update:

Prepare the software

- 1.- Extract all the content of the .ZIP file downloaded from www.ftemaximal.com in one folder of your PC.
- 2.- Switch the receiver off completely through the rear panel button.
- 3.- Connect the Serial Cable between the PC and the Receiver.
- 4.- Execute the ".exe" file previously extracted.
- 5.- Select the COM port number of your computer.

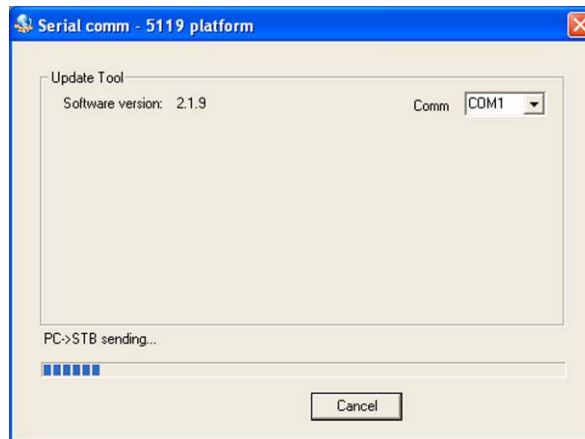


Upgrading the receiver

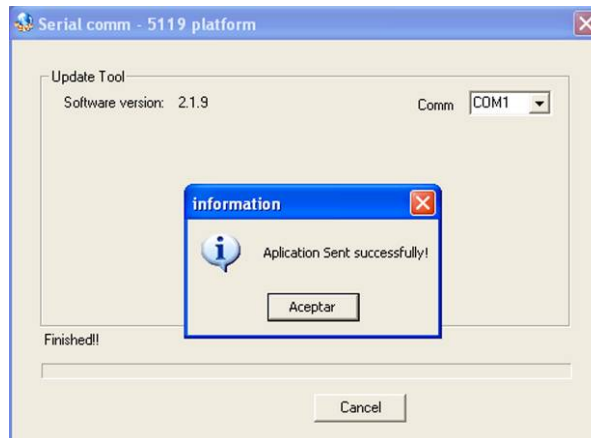
6.- Select the option "Send" in the software

7.- Power the receiver On through the button placed in the rear panel and make it sure that it is not in Standby mode.

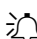
8.- If everything is correct, the information is to be dumped into the receiver.



9.- Once the status bar has achieved the 100%, the message "Application Sent successfully!" appears. Up to this point, the upgrade has finished.



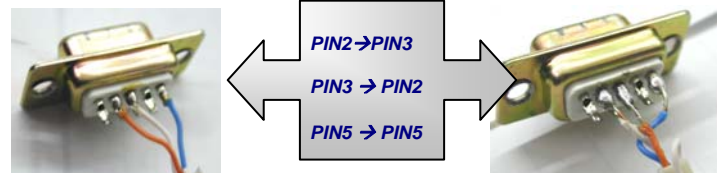
10.- When the upgrade finishes, exit the software pressing "Cancel"

 **ATTENTION!!!!** It is highly recommended to switch the receiver off and power it on again, once the upgrade process has finished.

➤ Upgrade from Receiver to Receiver

Needed material:

- One receiver with last software version as “MASTER”.
- Serial Cable “NULL MODEM”.
- One receiver to be updated as “SLAVE”.



1.- Switch off completely the receivers through the main button at the rear panel.

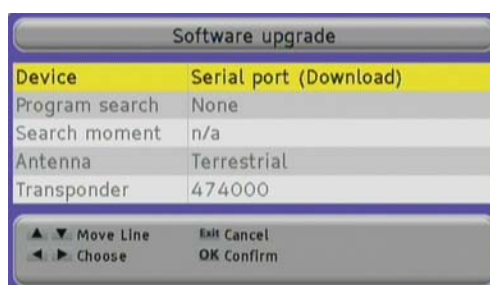
2.- Connect the MASTER and the SLAVE receivers with the serial cable “NULL MODEM”.

Upgrading the receiver

3.- Power on the SLAVE receiver through the main button at the rear panel, and go to Menu → System Preferences → Software Upgrade.



4.- Select the option “Serial Port (Download)” and press OK.



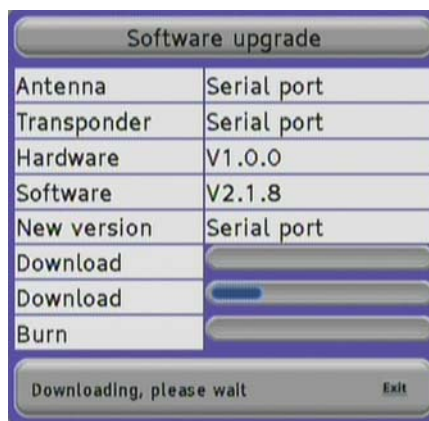
5.- Power On the MASTER receiver through the button placed at the rear panel, and go to Menu → System Preferences → Software Upgrade.

6.- Select the type of upgrade you want to carry out:

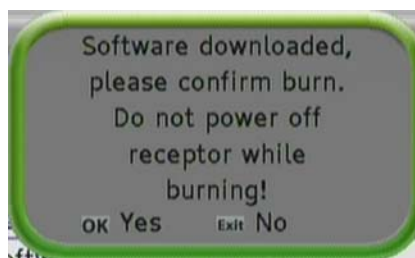
- Serial Port (Send all): it will dump into the SLAVE receiver all the information of the MASTER receiver.
- Serial Port (Send Application): it saves into the SLAVE receiver the new software.
- Serial Port (Send Backup): it saves into the SLAVE receiver the Backup of the MASTER receiver.
- Serial Port (Send B.B.D.D.): it saves into the SLAVE receiver the user's Data Base of the MASTER receiver.

NOTE: To upgrade the firmware version of the SLAVE receiver and save the channel table of the MASTER receiver, you must carry out firstly an update "Send Application" and then another one with "Send BBDD".

7.- Press OK on the MASTER receiver. The Data Transfer is to begin.



8.- Once the transfer is done, the writing on the SLAVE memory begins. Confirm with the button OK. During this process, don't switch off the SLAVE receiver.



When the process is ready, the SLAVE receiver will reboot by itself.