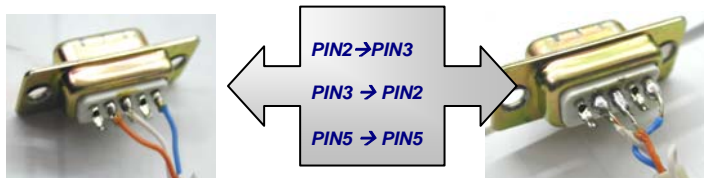


## Updating procedure for Series MAX

### ➤ Update from PC to receiver:

#### Necessary material:

- FTE\_Upgrade.exe software for PC.
- PC with serial port, COM\_1 or COM\_2.
- Windows 98 or XP.
- Serial cable "NULL MODEM".

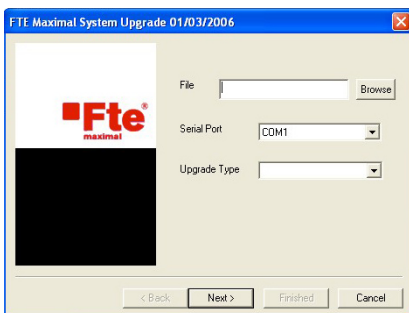


#### Software update:

**NOTE:** In case the receiver / receivers to be upgraded have the Low Power Consumption mode (LPC) and it is activated, the upgrading process will not begin. Please, disable the LPC option for upgrading.

#### Set the program

- Connect serial cable between PC and receiver.
- Execute FTE\_Upgrade.exe.
- Select communication port.
- Select .BIN file for updating using <Browse> button.
- Select the update mode "Main Code".

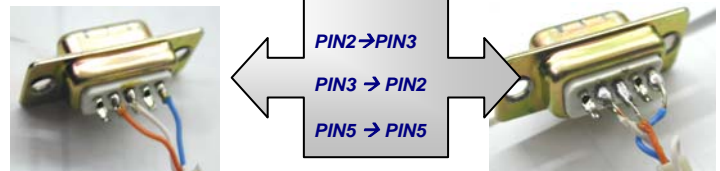




## ➤ Update from receiver to receiver

### Necessary material:

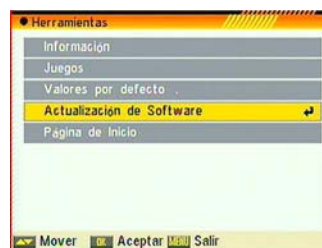
- A receiver with the last firmware version or the most recent "MASTER".
- Serial Cable "NULL MODEM."
- The receiver to upgrade "SLAVE"
- Serial cable "NULL MODEM".



### Software Update from Receiver to Receiver

**NOTE:** In case the receiver / receivers to be upgraded have the Low Power Consumption mode (LPC) and it is activated, the upgrading process will not begin. Please, disable the LPC option for upgrading.

- Link the two receivers with the serial cable.
- Go to the "software Update" menu in the Master receiver.



- Select the update mode " Main Code"
  - AllCode : write to the Slave receiver all the code of the Master.
  - MainCode: write to the Slave receiver all the new firmware
  - Defaultdb: write to the Slave receiver the default data base of Master receiver.
  - Userdb : write to the Slave receiver the data base made by the user of Master receiver.

- If you want to update the firmware version and transfer all the channels memorized from the Master receiver to the slave, you have to choose MainCode mode in the first updating and do another updating with the Userdb mode.
- Select "Start" and then switch on (with rear panel switch) the Slave receiver and be sure that the Slave receiver isn't in Standby mode.



- When the updating is finished you must turn off the Slave receiver.

## ➤ Updating from Receiver to Receiver

### Needed Material:

- One receiver with last version or the most recent. This receiver will be called MASTER.
- Cable Serial "NULL MODEM".
- The receiver to be upgraded. This receiver will be called SLAVE.
- Switch off both receivers with the Main Switch at the Back Panel.
- Connect the Master and the Slave receivers with the serial cable "NULL MODEM".



**⚠ NOTE:** In case the receiver / receivers to be upgraded have the Low Power Consumption mode (LPC) and it is activated, the upgrading process will not begin. Please, disable the LPC option for upgrading.

- Switch on the MASTER receiver through the rear switch and leave it in Stand-By mode pushing the POWER button on the remote control.

### Upgrading the receiver

If all the steps have been followed properly, you can now upgrade the SLAVE receiver. The upgrading by DATA TRANSFER is done through a code which is sent to the receiver using the remote control. This code may be one among the following ones:

- **123** Upgrading only of the de Software
- **456** Upgrading only the Data Base (including configuration)
- **369** Upgrading the Software and the Data (including configuration).

To upgrade the software of the SLAVE receiver, it would be only necessary to send to the MASTER receiver the keys combination 123.

- Now it's time to switch on the SLAVE receiver.
- When the updating is finished you must turn off the Slave receiver.