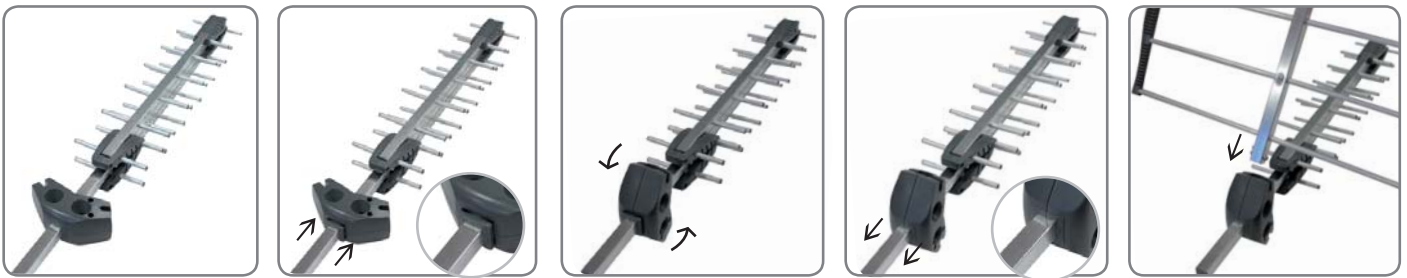




HyDra 45 Lte

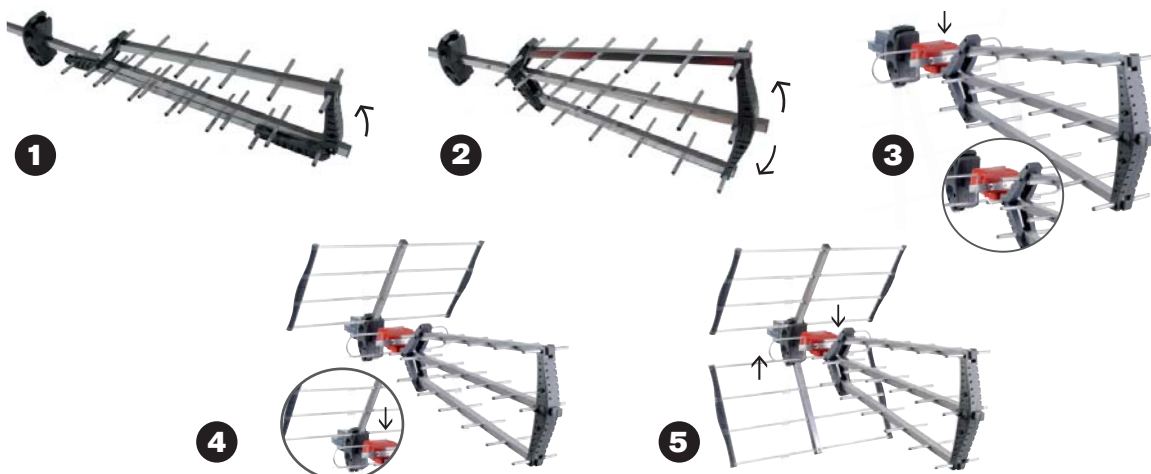
- ✓ **Easy and fast assembling in 5 clicks only and in less than 30 seconds**
- ✓ **No tools needed**
- ✓ **Exclusive design by Fte maximal**
- ✓ **Fixed to the mast with bridle and reinforced clamps**
- ✓ **Savings in storage space and transport**

**Optimization of the packaging system** with savings in the space and size in the transport and in storage too, thanks to our exclusive system in which the base turns 90° reducing the package size up to 25%\*.



\* Comparative made with EVO series

**Intuitive system and fast assembly**





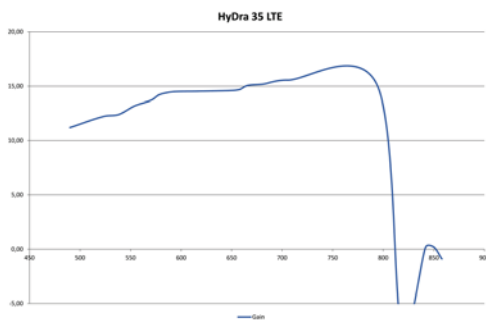
HyDra 35 Lte



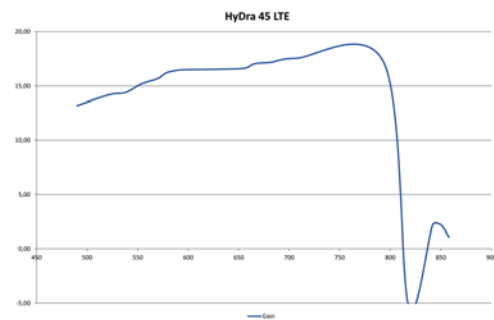
HyDra 45 Lte

**Technical specifications Outdoor UHF antennas HyDra Lte series**

	HyDra 35 Lte	HyDra 45 Lte
<b>Code</b>	9003943	9003935
<b>Elements</b>	29	43
<b>Channels</b>	21-60	21-60
<b>Frequencies (MHz)</b>	470 - 790	470 - 790
<b>Gain (dB)</b>	15	17
<b>Front to Back ratio (dB)</b>	24	28
<b>Half power beam width Horizontal (-3 dB)</b>	35°	32°
<b>Half power beam width Vertical (-3 dB)</b>	30-40°	55-65°
<b>Impedance (Ohm)</b>	75	75
<b>Length (mm)</b>	875	1020
<b>Weight (Kg)</b>	1,48	1,85
<b>Individual Packing Dimensions (W x H x D) (mm)</b>	<b>Box 1/2</b>	1080 x 135 x 70
	<b>Box 2/2</b>	315 x 535 x 40
<b>Accessories included</b>	Connector protector	Connector protector
<b>Packing quantity</b>	1 / 12	1 / 6



HyDra 35 Lte gain curve



HyDra 45 Lte gain curve