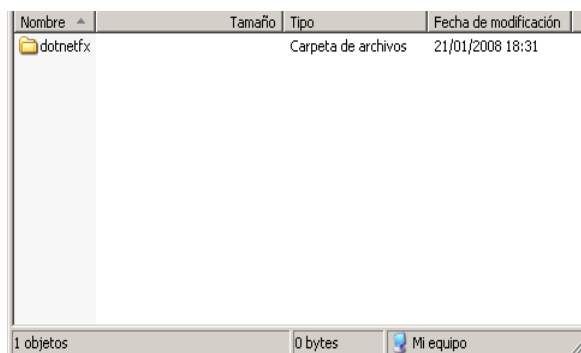


-Use of Pro20XManager Light- Upgrading PRO 20X

Steps to install the Pro20XManager Light (needed software to upgrade your PRO20X programmer):

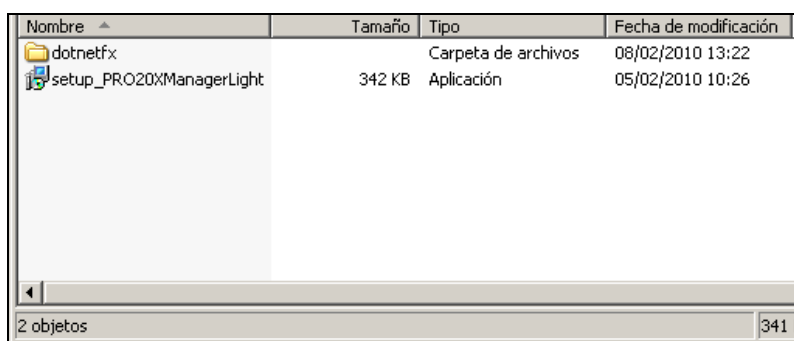
0.- Previous Step:

The first time you are going to install the software Pro20XManager Light, you might download the needed DLL, due to they could be requested at any moment during the installation. You can find these DLL in our website at: <http://www.ftemaximal.com/Firmware/DLL.zip> . When you unzip the file DLL.zip, you can see a structure like the following picture:



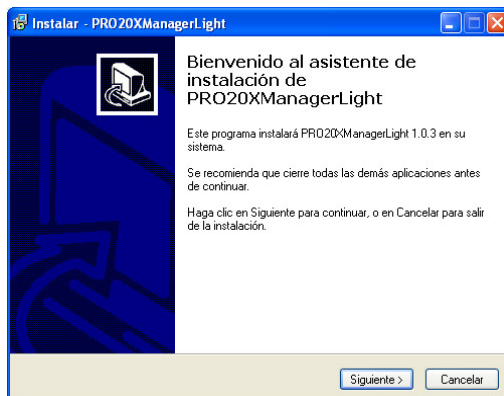
We recommend you to save these files, due to they could be requested during the installation of any updating program in the future.

1.- Download the Pro20XManager Light installer of our website and unzip the files in the folder where the needed DLL are placed. You will see a structure like the following picture:



NOTE: For future updating of the software, only change and you will have to download the content of the installer of the software Pro20XManager Light. The content of this file always will have to be placed, as the picture shows, in the folder which contains the requested DLL.

2.- Execute the “setup.exe” and follow the instructions shown at the screen to finish the installation.

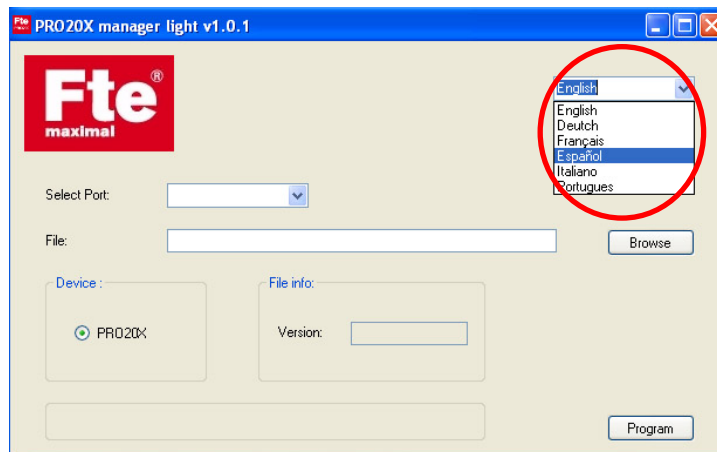


Once the Pro20XManager Light is installed, a new icon will appear on your Desktop. Click on it to execute the software.

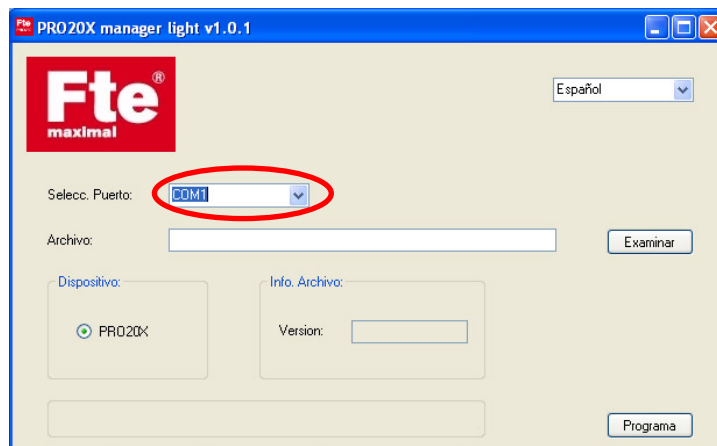


Steps to upgrade the PRO 20X:

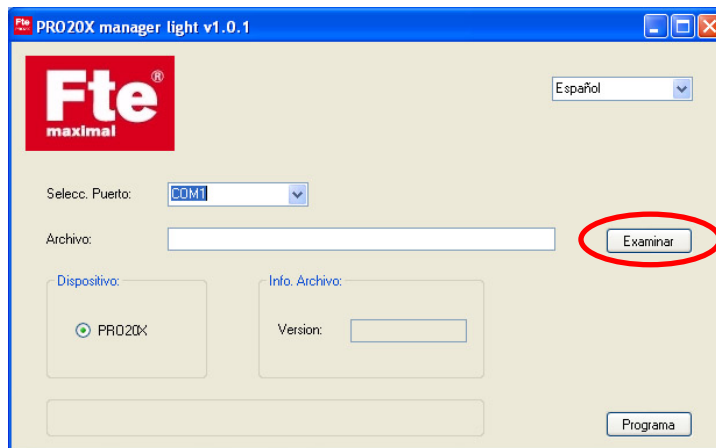
1.- Execute the Pro20XManager Light and select the language.



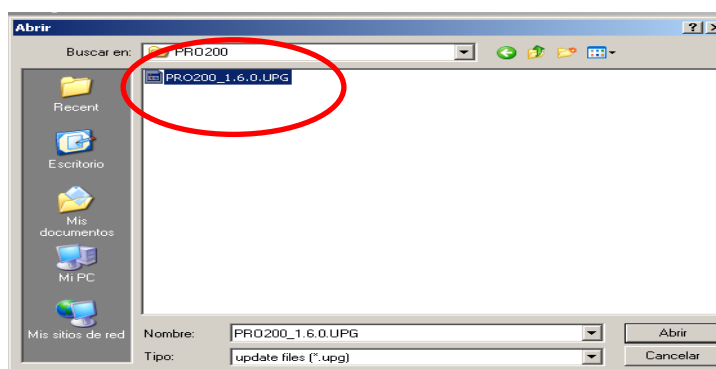
2.- Select communication port.



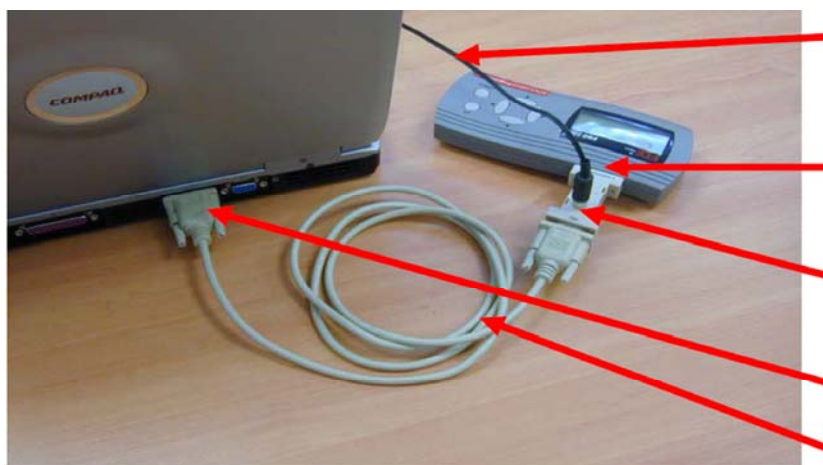
3.- Push on the "Browse" button.



4.- Indicate the route where the file you want to load to the PRO20X is placed. Select the file "PRO20X_x.x.x.UPG" (it is the latest official firmware for the programmer, and you can find it in our website).



5.- Prepare the PRO20X for the upgrading. Connect the system like the following picture indicates using the Kit PRO_20X interface.



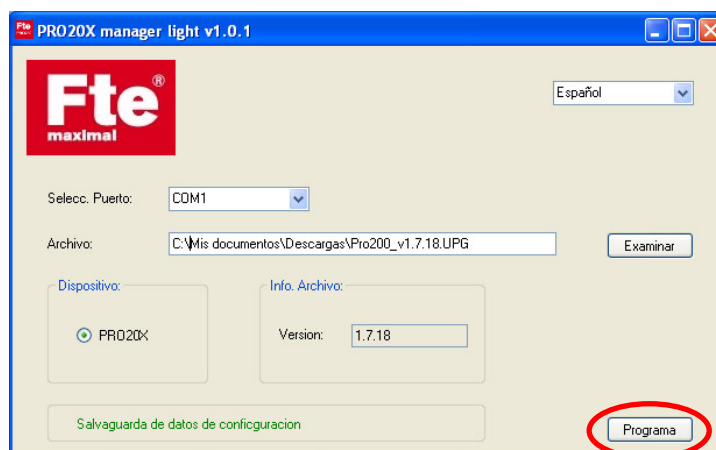
- DC cable, 12V to 24V
- PRO 200 RS 232
- DC injector
- PC RS 232
- Pin to pin cable

6.- The PRO20X only will accept a new software through Serial Port in the working mode “ISP programming”.

To enter in this mode, push simultaneously the DOWN and OK Keys during the first seconds after connecting the PRO20X.



7.- Finally, push on the “Program” button. The transfer of the new software will begin. It finishes resetting the module PRO20X. The new software is ready to be used.



NOTE: In case you had any problem upgrading, you can try it again until it gets programmed properly.

NOTE: Once the loading process is finished, the PRO20X will be restarted automatically, therefore it will try to detect some known module, and since it cannot get it (it's connected to the PC), it will give an “ERROR module not supported press OK” message. This is normal, and it doesn't mean that the software has been loaded wrongly. To be sure that the new SW has been properly loaded, you have to check the version number resetting the feeding to the PRO20X.