

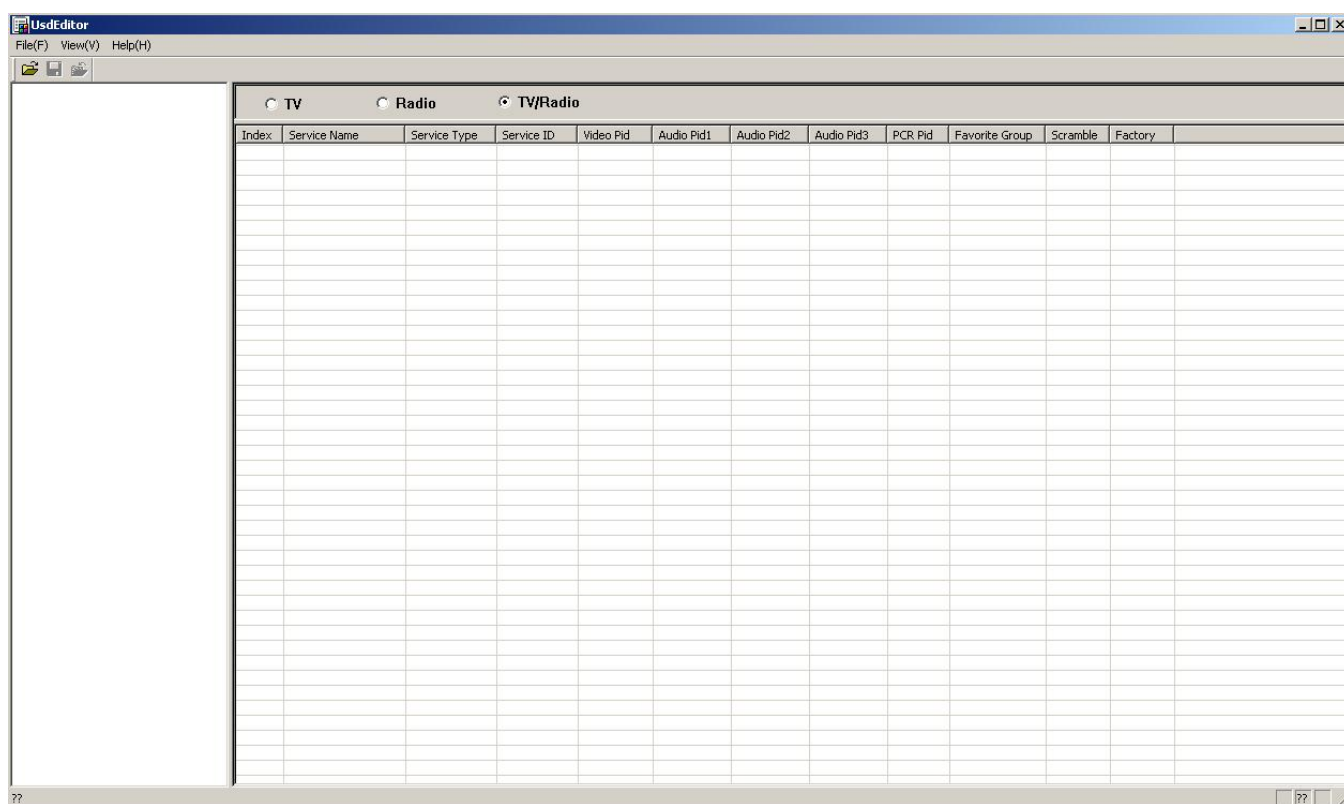
# Quick guide for UsdEditor

## 1. Introduction

### 1.1. Summary

UsdEditor program is designed for updating the “User Database” from a PC, because edition of channel position using remote control could be sometimes very troubled, and then download new data to the receiver.

The UsdEditor data source can be from \*.usd file. User can create or upload data (“user database”) from receiver. Later, user can choose “User Database” for downloading and upgrading the receiver.



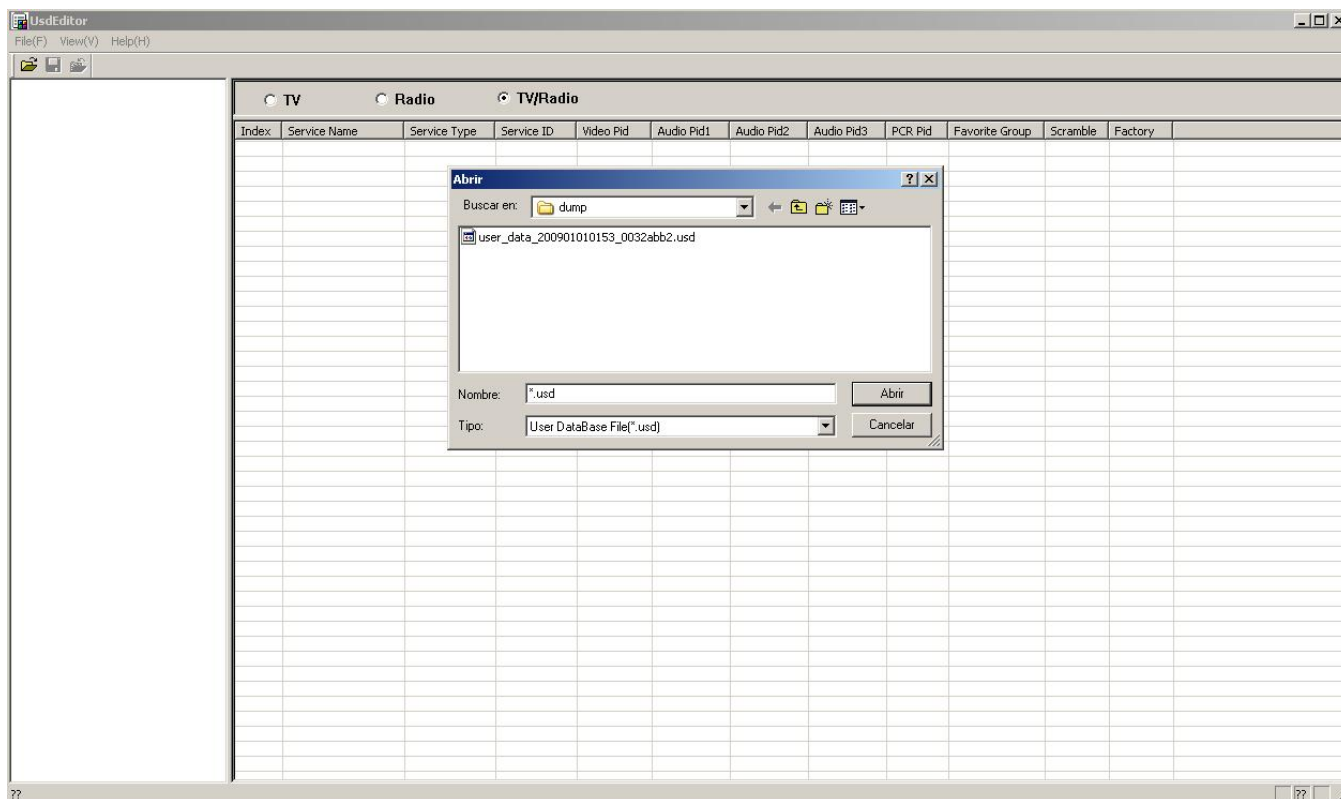
### 1.2. Files

\*.usd: These data files only include User Database.

## 2. Operation

### 2.1. Open

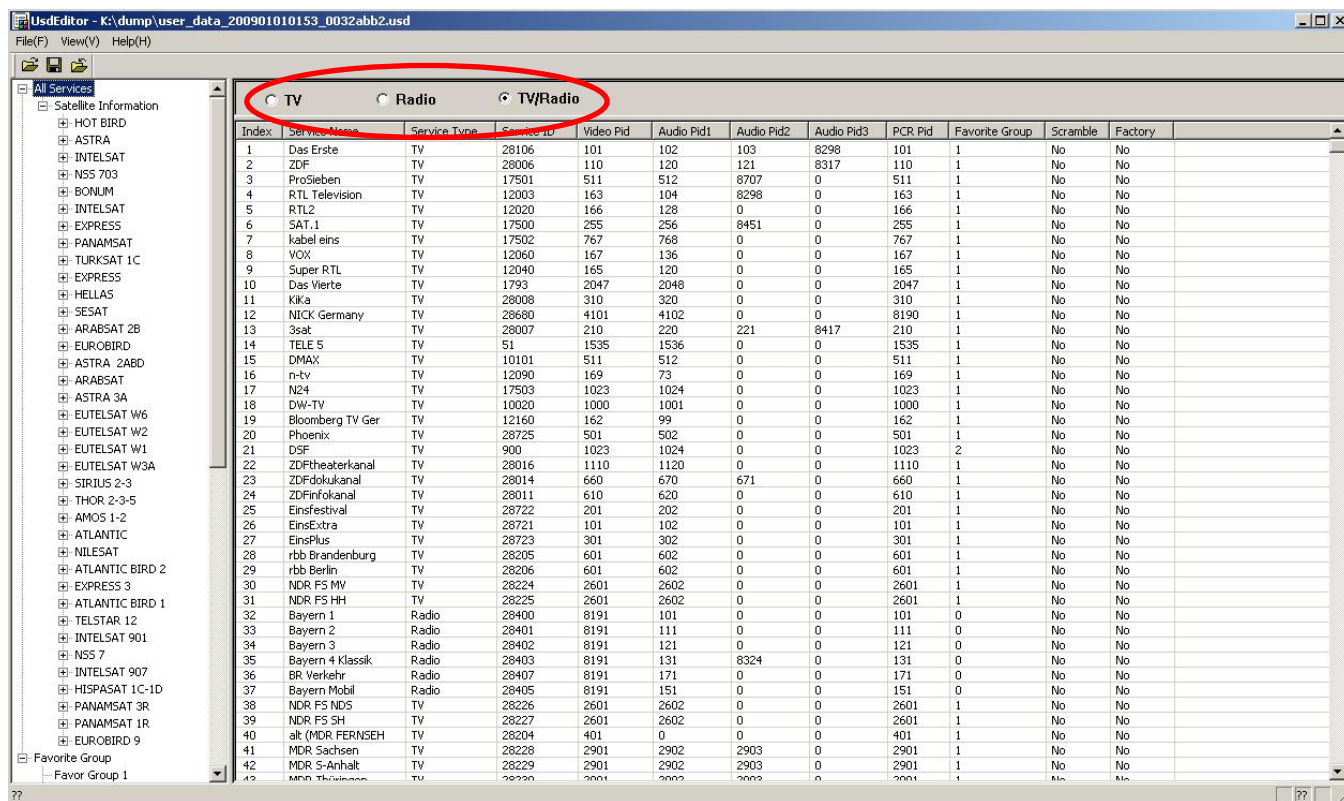
Select the Menu option “File → Open” and choose the file \*.usd.



## 2.2. Browse

The “Left window” list the Satellite/TP tree at the opened file. When select one TP, the “Right window” will list the Programs for this TP.

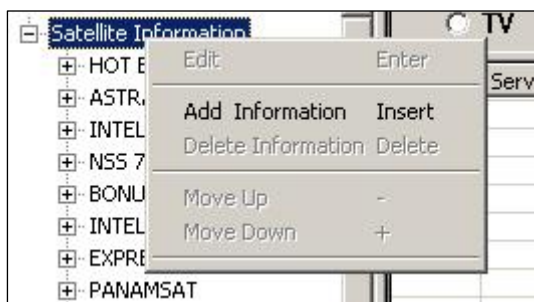
On top part of right window, user can find three buttons for filtering the kind of channels: “TV”, “Radio” or “TV/Radio”.



## 2.3. Edit

### 2.3.1. Satellite

Add Satellite: Once “Satellite information” is selected, click right mouse button and select option “Add information”



Satellite Information

Satellite Name

☐ Selected\_flag
Tuner

LNB Type

First Frequency

Second Frequency

Satellite Position

Satellite Longitude
###.##

East / West Flag

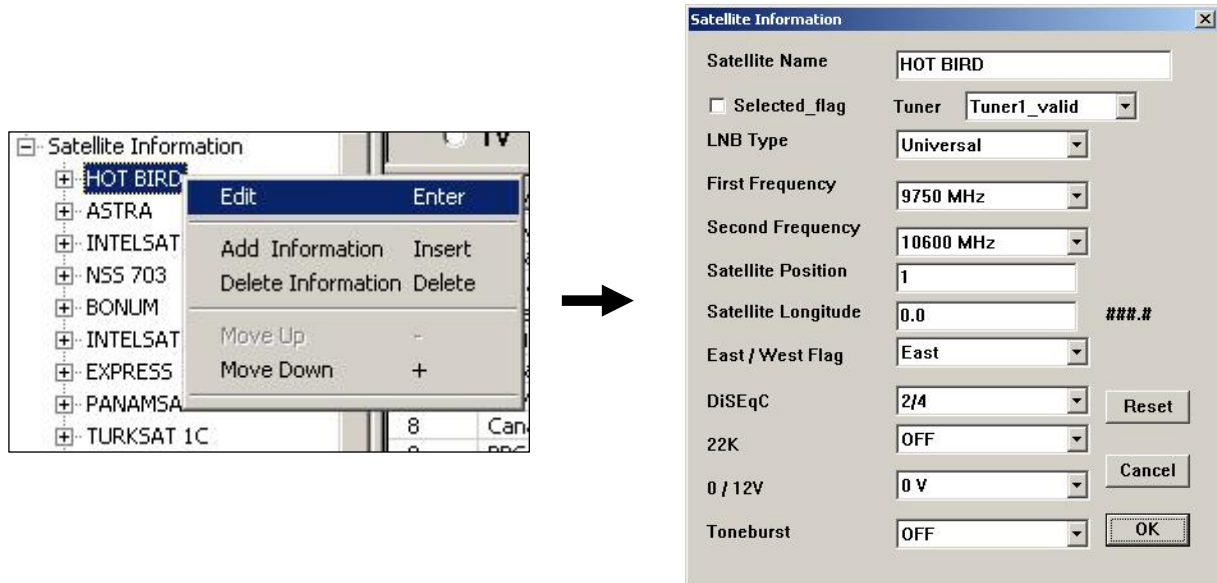
DiSEqC
Reset

22K

0 / 12V
Cancel

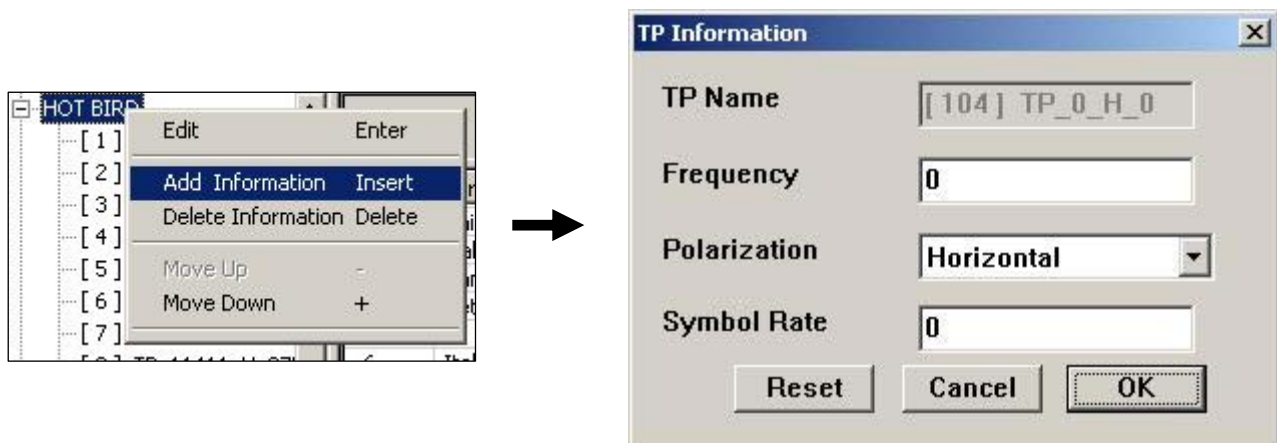
Toneburst
OK

Edit Satellite: Once satellite that we pretend to edit is selected, click right mouse button and select option "Edit"

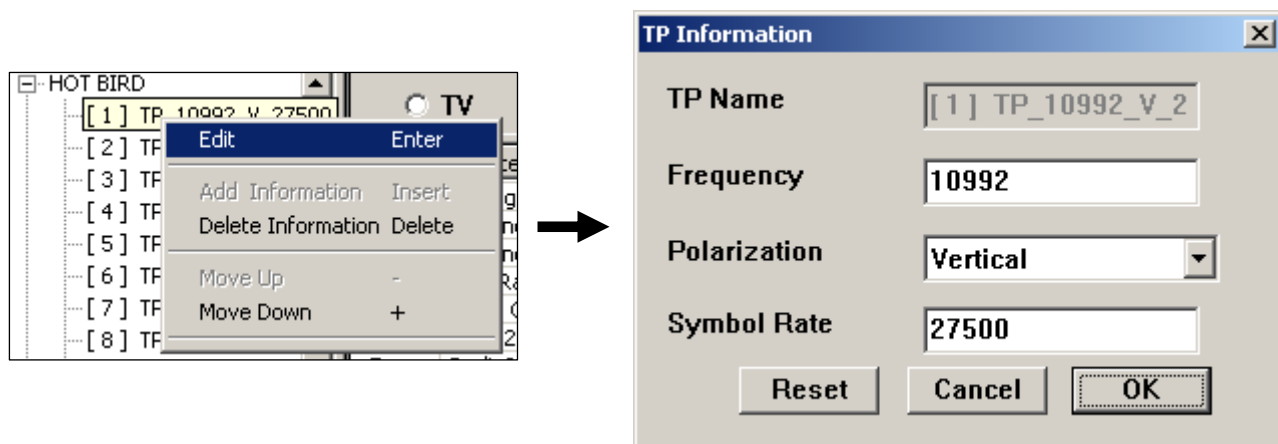


### 2.3.2. TP

Add TP: Once satellite that we pretend to add TP is selected, click right mouse button and select option "Add information"

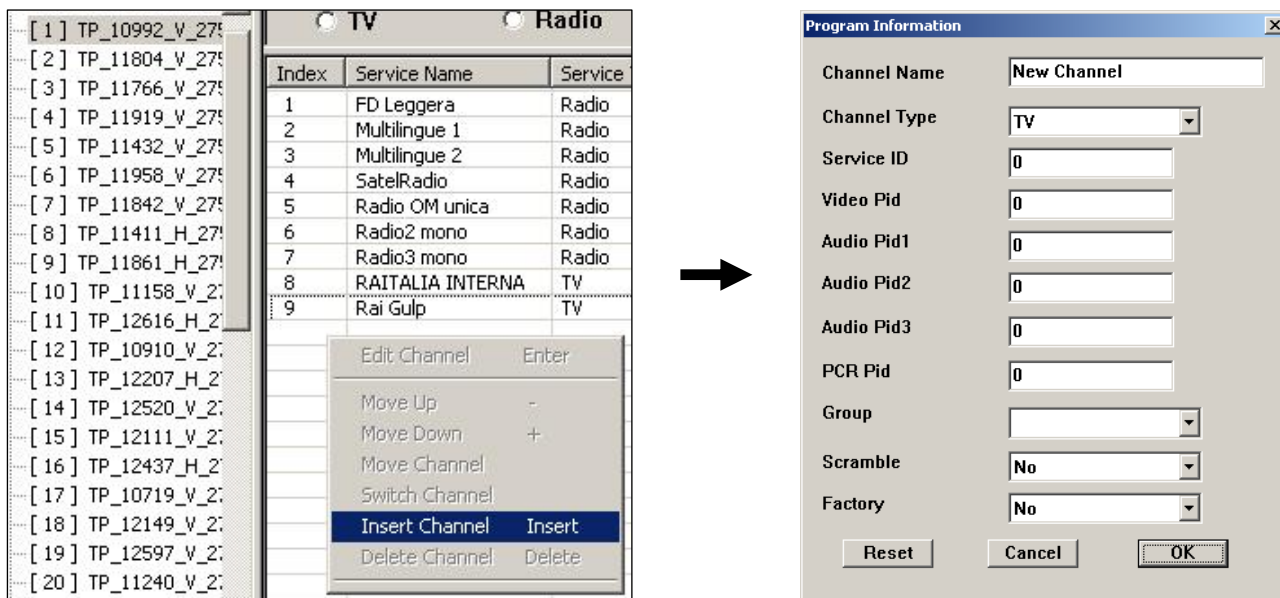


Edit TP: Once TP that we pretend to edit is selected, click right mouse button and select option "Edit".

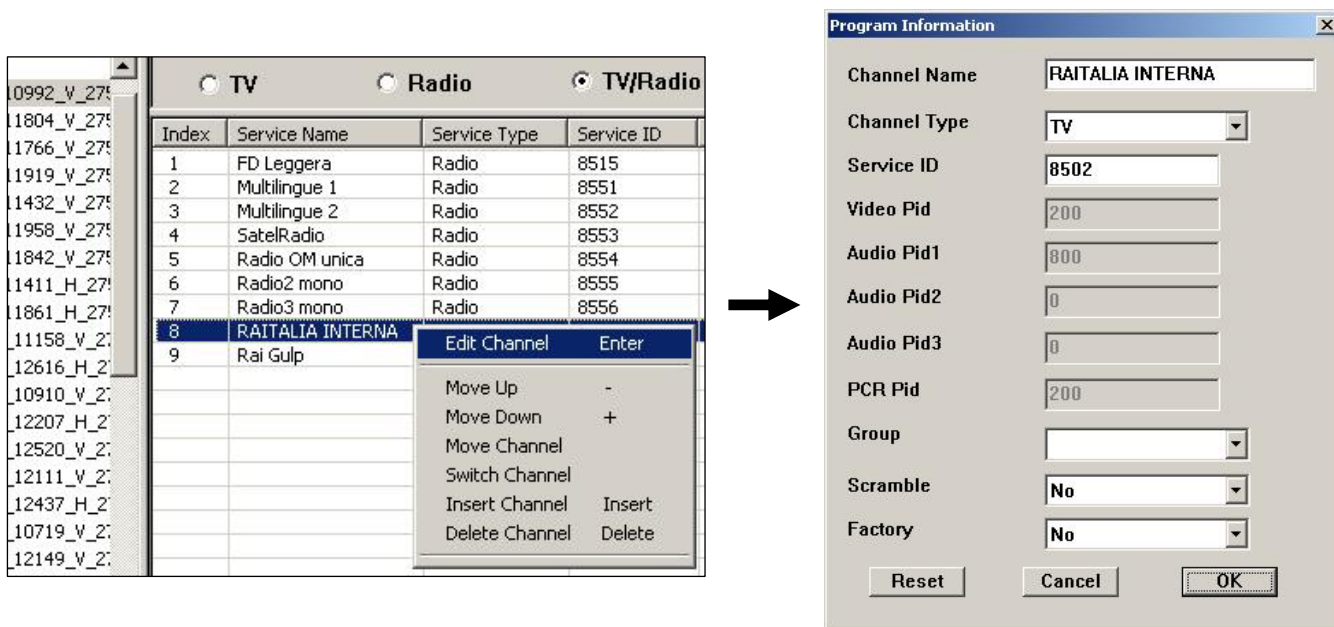


### 2.3.3. Program

Add Program: Once channel list that we pretend to add program is selected, click right mouse button and select option "Insert Channel"

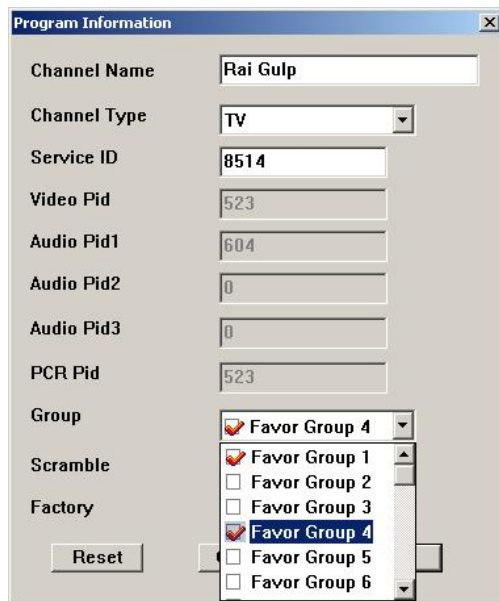


Edit Program: Once program that we pretend to edit is selected, click right mouse button and select option "Edit Channel"





When Insert Channel/Edit Channel, user can make one program to one or more Favourite Groups



**Program Information**

Channel Name: Rai Gulp

Channel Type: TV

Service ID: 8514

Video Pid: 523

Audio Pid1: 604

Audio Pid2: 0

Audio Pid3: 0

PCR Pid: 523

Group: Favor Group 4

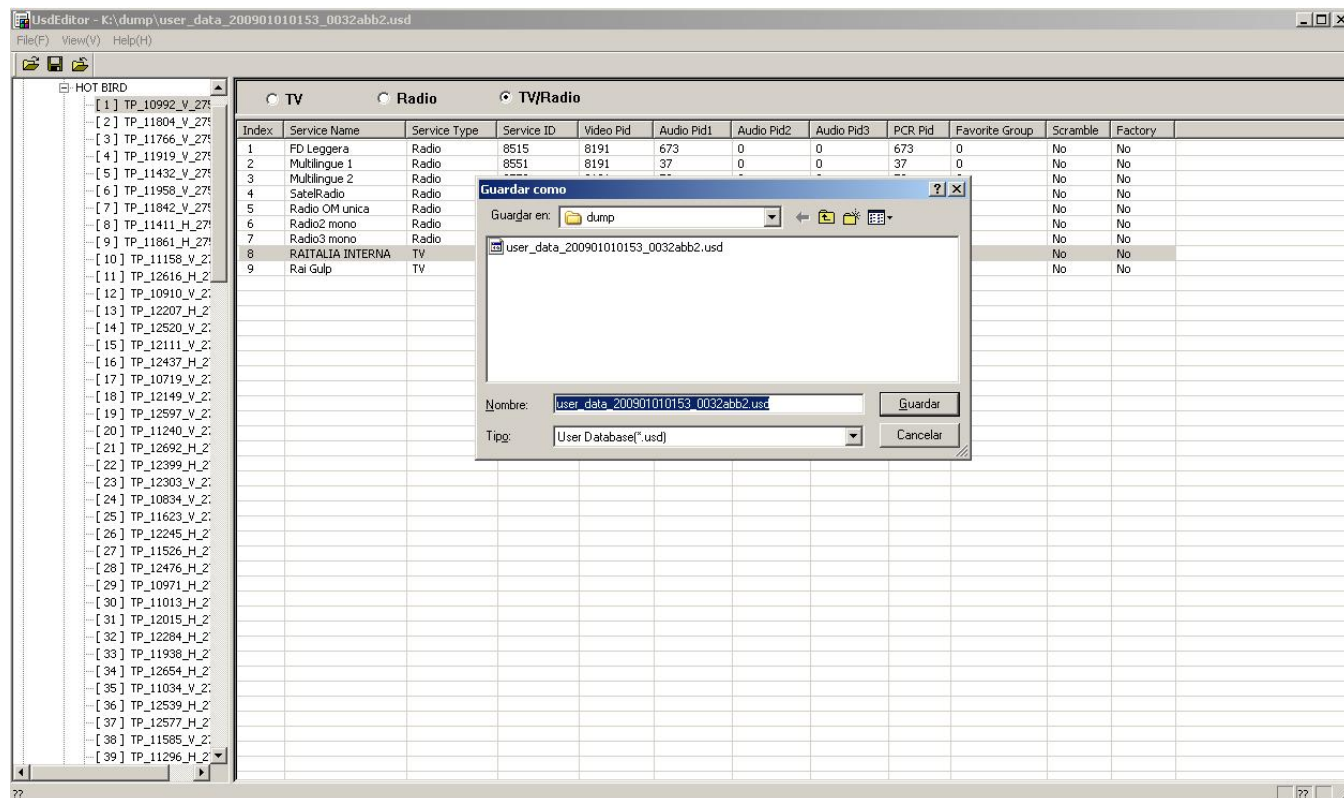
Scramble: Favor Group 1, Favor Group 2, Favor Group 3, Favor Group 4, Favor Group 5, Favor Group 6

Factory: [ ]

Reset

## 2.4. Save

Select the Menu option "File → Save / Save as". Only \*.usd can be saved.



UsdEditor - K:\dump\user\_data\_200901010153\_0032abb2.usd

File(F) View(V) Help(H)

HOT BIRD

[1] TP\_10992\_V\_27  
[2] TP\_11804\_V\_27  
[3] TP\_11766\_V\_27  
[4] TP\_11919\_V\_27  
[5] TP\_11432\_V\_27  
[6] TP\_11958\_V\_27  
[7] TP\_11842\_V\_27  
[8] TP\_11411\_H\_27  
[9] TP\_11861\_H\_27  
[10] TP\_11158\_V\_2  
[11] TP\_12616\_H\_2  
[12] TP\_10910\_V\_2  
[13] TP\_12207\_H\_2  
[14] TP\_12520\_V\_2  
[15] TP\_12111\_V\_2  
[16] TP\_12437\_H\_2  
[17] TP\_10719\_V\_2  
[18] TP\_12149\_V\_2  
[19] TP\_12597\_V\_2  
[20] TP\_11240\_V\_2  
[21] TP\_12692\_H\_2  
[22] TP\_12399\_H\_2  
[23] TP\_12303\_V\_2  
[24] TP\_10834\_V\_2  
[25] TP\_11623\_V\_2  
[26] TP\_12245\_H\_2  
[27] TP\_11526\_H\_2  
[28] TP\_12476\_H\_2  
[29] TP\_10971\_H\_2  
[30] TP\_11013\_H\_2  
[31] TP\_12015\_H\_2  
[32] TP\_12284\_H\_2  
[33] TP\_11938\_H\_2  
[34] TP\_12654\_H\_2  
[35] TP\_11034\_V\_2  
[36] TP\_12539\_H\_2  
[37] TP\_12577\_H\_2  
[38] TP\_11585\_V\_2  
[39] TP\_11296\_H\_2

TV Radio TV/Radio

Index	Service Name	Service Type	Service ID	Video Pid	Audio Pid1	Audio Pid2	Audio Pid3	PCR Pid	Favorite Group	Scramble	Factory
1	FD Leggera	Radio	8515	8191	673	0	0	673	0	No	No
2	Multilingue 1	Radio	8551	8191	37	0	0	37	0	No	No
3	Multilingue 2	Radio								No	No
4	SatelRadio	Radio								No	No
5	Radio OM unica	Radio								No	No
6	Radio2 mono	Radio								No	No
7	Radio3 mono	Radio								No	No
8	RAITALIA INTERNA	TV								No	No
9	Rai Gulp	TV								No	No

Guardar como

Guardar en: K:\dump

user\_data\_200901010153\_0032abb2.usd

Nombre: user\_data\_200901010153\_0032abb2.usd

Tipg: User Database(\*.usd)

Guardar Cancelar