

Index

Chapter 1.	Previous steps.....	2
1.1.	Minimum requirements.....	2
1.2.	Configuration of the receiver.....	2
1.3.	Installation of IP LAN SOFT in PC.....	3
Chapter 2.	IP LAN SOFT	4
2.1.	Previous configuration of the application.....	4
2.2.	Watching TV channels on PC.....	5
2.3.	Sending a video or DVD file from the PC to the receiver.....	6
2.4.	Turning video formats into .TS for PVR receivers.....	7

Chapter1 Previous steps.



This user's guide is adapted to software version v.2.9 de IP LAN SOFT.
The receiver must have the software version 2.2.21 or subsequent for a correct working.

For future software updates, you can download the user's guide in the following website:
<http://www.ftemaximal.com>

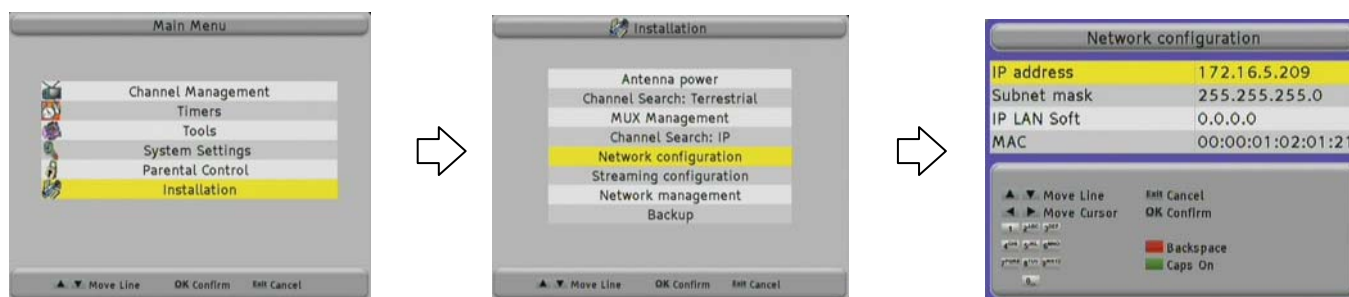
1.1. Minimum requirements

IP LAN SOFT needs the following requirements in order to work correctly:
Pentium IV processor with 2,4GHz, with 512MB RAM and with *Windows 2000*, *Windows XP SP2*, *Windows Vista* or upper operating system

1.2. Configuration of the receiver

In order to establish communication between the receiver and the PC it is necessary to configure the IP addresses of both in the receiver.

In the receiver, the configuration is made in *Network configuration* and *Streaming configuration* menus. In order to access there, press *Menu* key with [▲▼] buttons, place the cursor over *Installation* and press [OK]:



The *IP address* of the receiver (in the example 192.16.5.209), the *subnet mask*, that usually is the one shown, and the IP address of the PC where *IP LAN SOFT* is installed must be indicated in the **Network configuration** menu



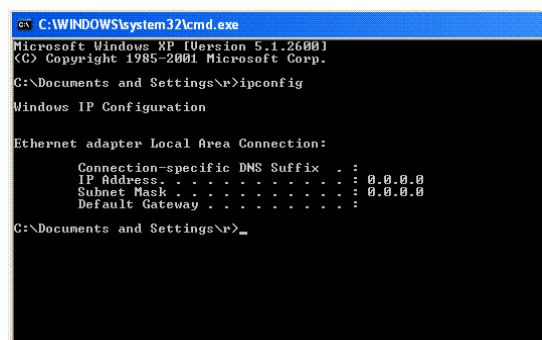
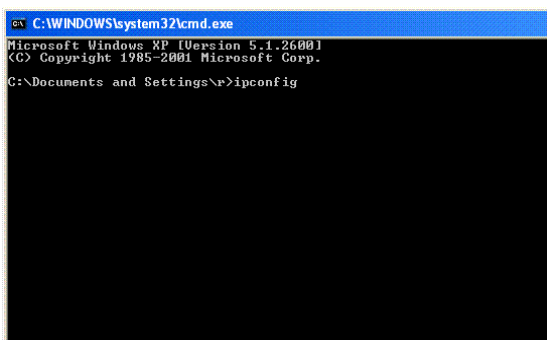
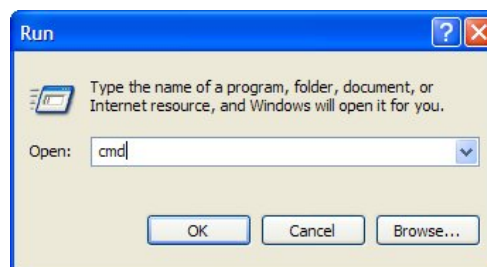
The *Streaming configuration* menu shows the *IP assigned* (which must coincide with the one indicated in the *IP LAN SOFT* section in the *Net configuration* menu, if we wish to establish communication between them) and the port we are going to use, which must coincide with the one indicated in the IP LAN SOFT application installed in the PC.
The *Streaming* field must be *On* in order to establish communication between PC and receiver.

In order to activate or deactivate the streaming sending outside the *Streaming Configuration* menu of the receiver, we can press directly the GREEN button in the running of the teletext. This button acts in the *Streaming* field, commuting between ON- OFF.



NOTE: In order to know the IP address of a PC, please follow the next steps:

- Select *Run* from *Windows Start* menu
- In the opening window, please write *cmd* command and press *OK*.
- The DOS/CMD window will be opened. Write *ipconfig* command. In the same window some net parameters will be shown. The IP address of your PC is the one indicated in the *IP Address* line.



In the IP address of your PC is 192.168.20.4, you can assign IP address 192.168.20.15 and network mask 255.255.255.0 to your receiver.

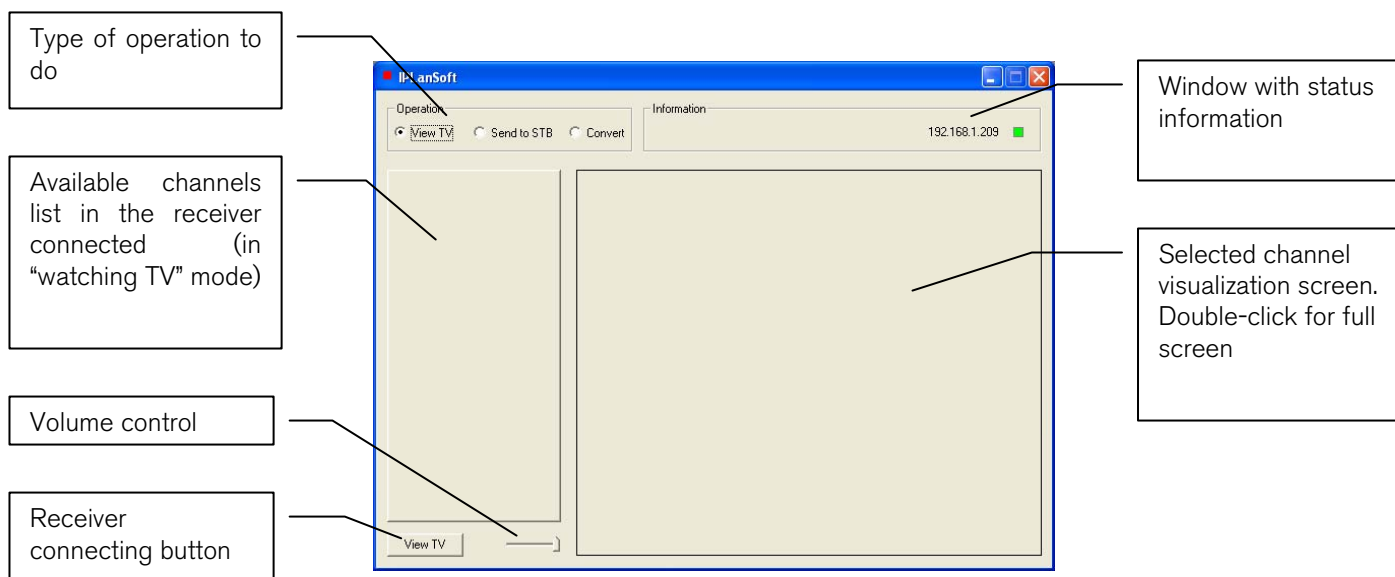
1.3. Installation of IP LAN SOFT in the PC

The first time you are going to use IP LAN SOFT application you must install it in your PC. Follow the next steps in order to install IP LAN SOFT correctly in your PC:

1. Take out the contents of the .ZIP file in a folder of your PC.
2. Run *IP LAN Soft_2.9.exe* file
3. Follow all the steps until you complete the installation.

Chapter 2. IP LAN SOFT

IP LAN SOFT application allows the connection of your PC to the IP receivers you have installed. The general appearance of the application is as follows:

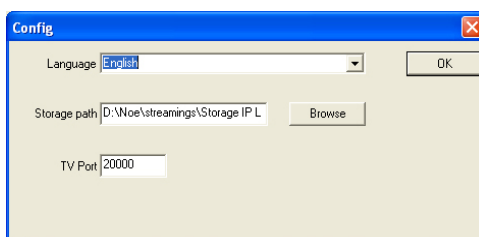


IP LAN SOFT has three basic functions:

- View TV: it can visualize the TV channels sent from a receiver.
- Send to STB: it sends a video file to the receiver.
- Convert: It turns a video file into .TS format, which is legible by FTE receivers.

2.1 Previous configuration of the application

The first time you run IP LAN SOFT application, the program will ask you to introduce some configuring parameters:



- Language: Select the language of the application.
- Storage path: Introduce the assigned folder where the recordings made from the application will be stored. Press [Explore] button to search the folder in your PC.
- TV Port: Port of connection with the receiver (it must coincide with the one indicated in the receiver in the menu *Streaming configuration*)
- Press [OK] to go out and save the changes.

In order to configure these parameters later, press **Fte** icon in the bar of IP LAN SOFT application (in the corner above on the left). The menu will be dropped down and you must select *Options* to access to the configuration menu.

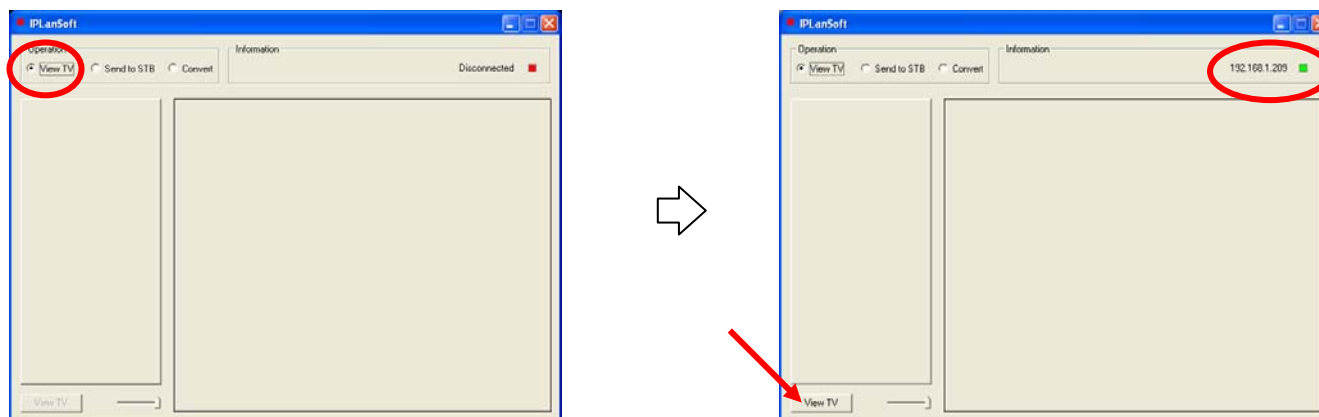
2.2 Watching TV channels on PC

This function allows watching the channels of the receiver in the PC and selecting them from a list.

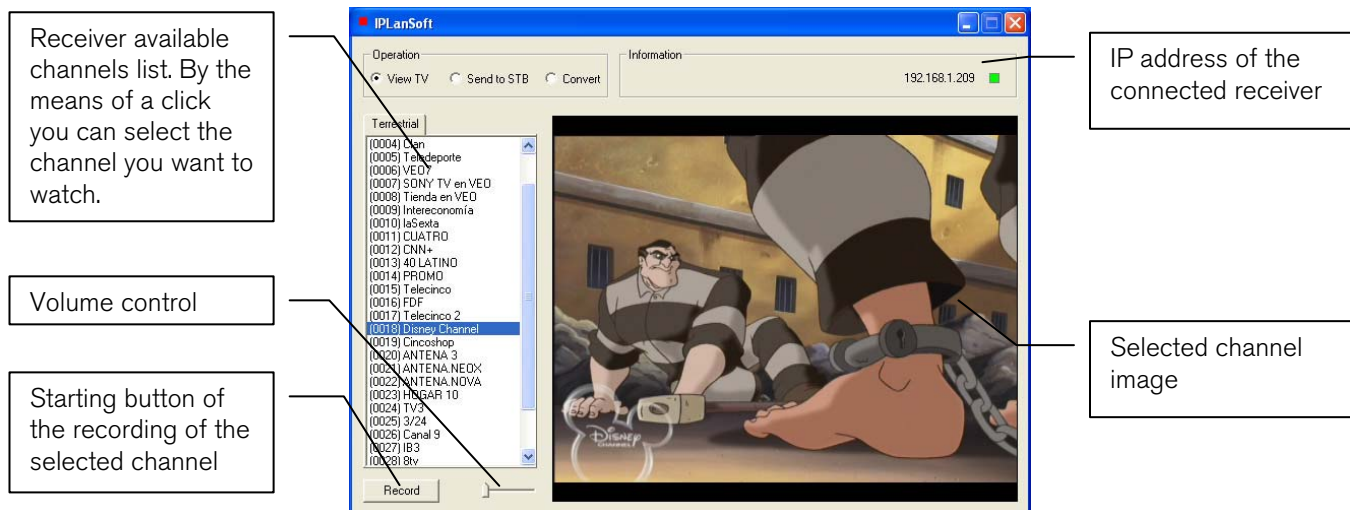
Select *View TV* in the *Operation* section.

If the receiver is switched off, the message “*Disconnected*” will appear in the *Information* section of the application. Switch the receiver on and make sure that the port is the same as the one shown on the receiver. If the configuration is correct, the IP address of the receiver will be shown in the *Information* section of the application.

Press [View TV] button, placed in the low part on the left of the application. The message “*Get list*” will appear in the information screen. Wait until the list of channels is loaded.



In this mode the screen shows the following configuration:



In this situation, the receiver will tune in the channel requested by IP LAN SOFT, showing it also in the main TV connected to the receiver. The same way, if you change the channel in the receiver, it will be shown in IP LAN SOFT.

You can control the audio volume regardless of the volume of the receiver. Press the volume bar in order to change it.

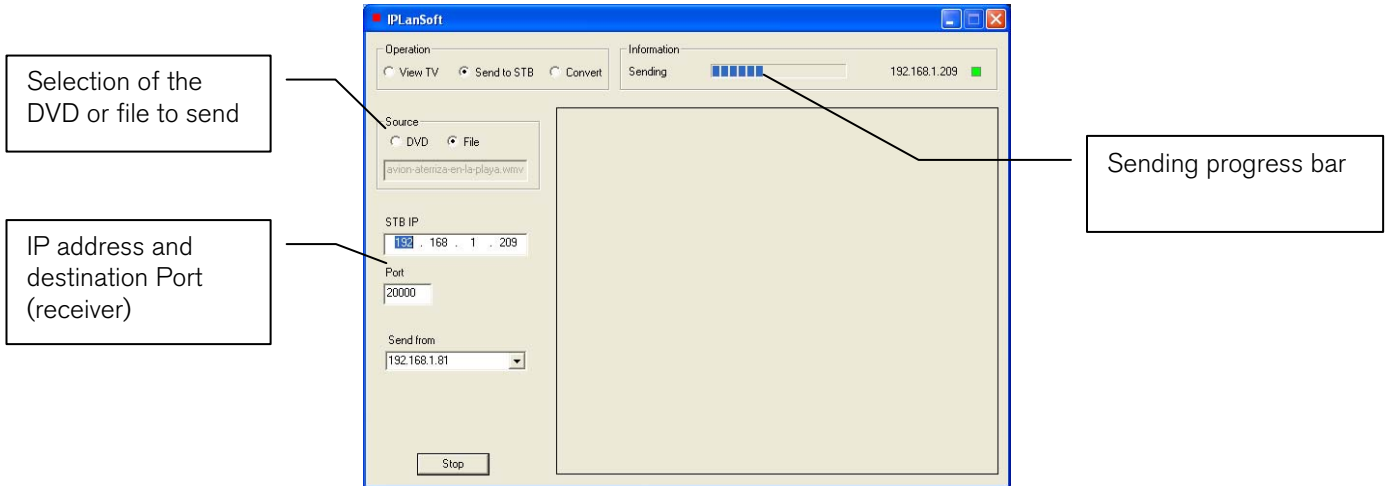
This function has a button for recording in the hard disk of the PC too. Press the button [Record] and a .TS file will start storing in the hard disk in the folder you have previously selected. In order to finish the recording, press [Stop] button.

The receiver that is communicated with IP LAN SOFT becomes a *PVR Ready* receiver, that is, you can make the recording directly from the receiver in the hard disk of the PC that has the application installed. This RECORDING – STOP function is made by the means of the RED key of the running of the teletext.

2.3 Sending a video or DVD file from the PC to the receiver

This function sends to the receiver the file you select (or a DVD content). To do so, IP LAN SOFT makes the conversion, in real time, from the file format (MPG, DIVX...) into the IP TV that the receiver understands.

NOTE: This conversion could require more or less resources from your PC, depending on the features it has. If you see that the sending is too slow, we recommend you to turn the video file into Transport Stream format. Check the following section of this user's guide to make the conversion. Later send the file with .TS extension.

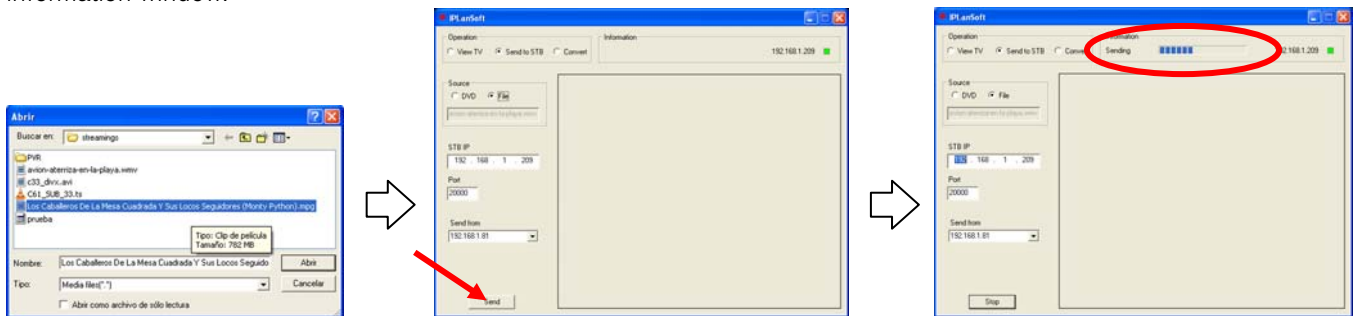


Select *Send to STB* in the *Operation* window

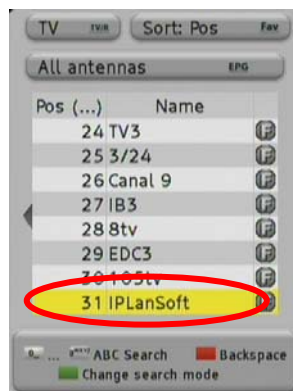
In the *Source* (origin) window select *DVD* or *File* depending on the kind of file you want to send to the receiver. In both cases, a new window will appear so you will be able to select the file you want to send.



Configure the IP address and the port of the assigned receiver in the *STB IP* and *Port* fields. In the *Sending from* field you must select the IP address of your PC.

Press [Send] button. The sending of the video file will start and a temporary progress bar of the video will appear in the information window.



When the receiver communicates with IP LAN SOFT it creates a TV channel in its channel list with the name *IP LAN SOFT*, and automatically it will show you this channel in the screen of your TV.

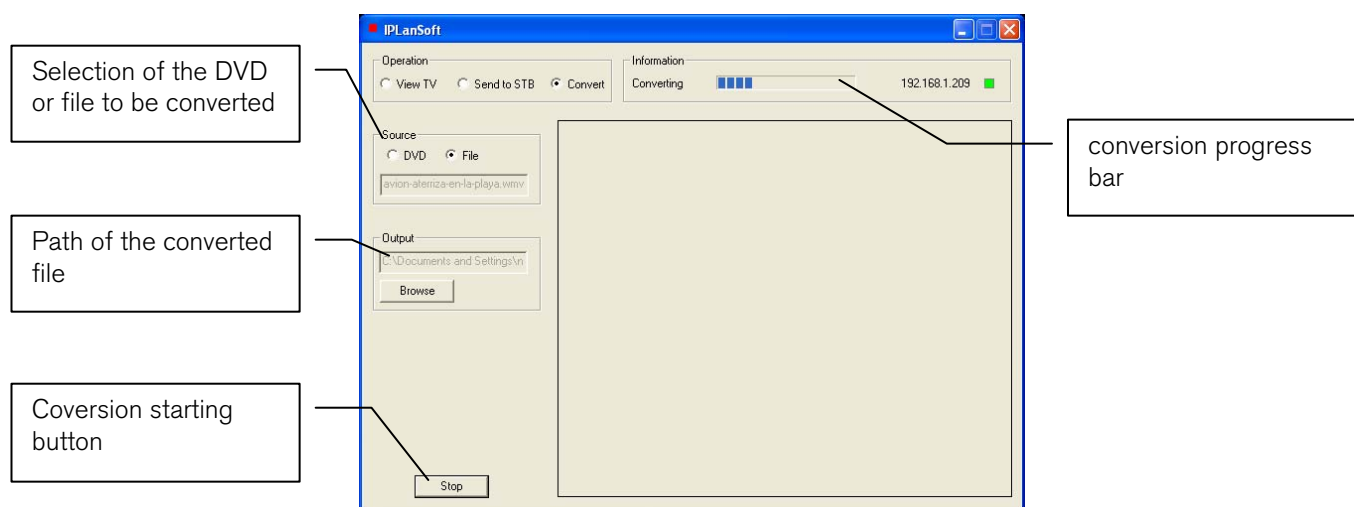


In *Send to STB* mode from the receiver it is possible to pause the playing with the RED key in the teletext (it Works as PAUSE-PLAY) and during the playing the   buttons allow jumping in the playing. In this case the volume regulation can only be made by the means of VOL +/- keys.

Pressing the [Stop] button in IP LAN SOFT application, the sending of the video or DVD file stops.

2.4 Turning video formats into .TS for PVR receivers

Through this function we can convert video formats for making them compatible with a PVR, that is, a file or a DVD could turn into TS (Transport Stream) format that could be played by the means of a PVR receiver.



Select *Convert* in *Operation* window

In the *Source* (origin) window, select *DVD* or *File* depending on the kind of file you want to turn into TS. In both cases, a new window where you can select the file you want to convert will appear.

In order to select the path of the converted file, press the [Explore] button, placed in the *Exit* window. A new window will be opened; select the path where you wish to save the converted .TS video and press [OK].

NOTE: In the chosen path, the application will save, besides of the .TS file, the index files that are necessary for playing in a PVR receiver. These indexes are two files with .IND and .MET extension that are created inside the *PVR* folder together with the file with .TS extension. If the *PVR* folder does not exist, the application will require its creation. Press OK in the dialog box.

Press [Converting] button. The application will start converting the file and it will show a progress bar. Press [stop] button at any time in order to cancel the operation



For having a correct video playing in a PVR receiver, the files must be structured as follows:

The file with .IND extension must be copied in the *PVR* folder of the memory or external disk together with the converted file with .TS extension, while the file with .MET extension must be copied in the METADATA folder for its correct playing.

