

Updating procedure for IPS 310 – IPT 310

Important information concerning IPS and IPT 310 update

1. We recommend to have installed version **v.8.5.6b** or higher of IP LAN TV Manager before installing the new firmware on the IP headends.
2. Before installing the latest version of firmware of IPS 310 and IPT 310, please verify the number of version of the headend:
 - For headends whose software version number is *v.3.6.5.x* please install file:
"V3.6.5.24_watchdog.bin"
 - For headends whose software version number is *v.4.2.9.x* please install file:
"vserver_V4.2.9.25_deluxe_watchdog_pupd.pupd"

In case of any doubt, please contact with sat@ftemaximal.com

In order to make the updating of IPS – IPT modules, follow the following steps:

1. PC connection to IP modules

Configure the IP address of the PC in the same net where the module is. To do so, follow the next steps:

- For Windows XP:

Access to the net configuration pressing *Start menu • Control Panel • Net connections*.
Press the right button of the Mouse over the local area connection icon and select *Properties*.
In the *General* tab select in *internet protocol* list *TCP/IP* and press *Properties* button.
A configuring window of the IP net will appear.

- For Windows Vista and Windows 7:

Access to the net configuration pressing *Start Menu • Control Panel • Net centre and shared resources • Manage net connections*.
Press the right button of the Mouse over the local area connection icon and select *Properties*. Select in the *Internet protocol version 4* list (*TCP/IP v4*) and press *Properties* button.
A configuring window of the IP net will appear.

Once you have reached the IP configuring window,, modify the following fields:


- *IP address*: It must have a value that has to be in the same net as the IP address by default of the modules: 192.168.4.x (x: any value between 1 and 255)
- *Subnet mask*: Must have the value 255.255.255.0
- *Predetermined gateway*: It must have a value within the same IP net as the one where the module is.. Normally 192.168.4.1

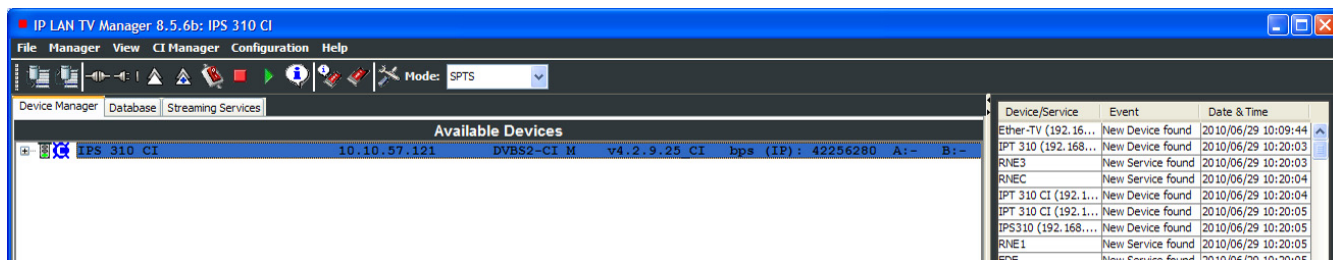
2. IP modules updating


In order to proceed to the updating you must have the file with the last available version, which can be downloaded from:

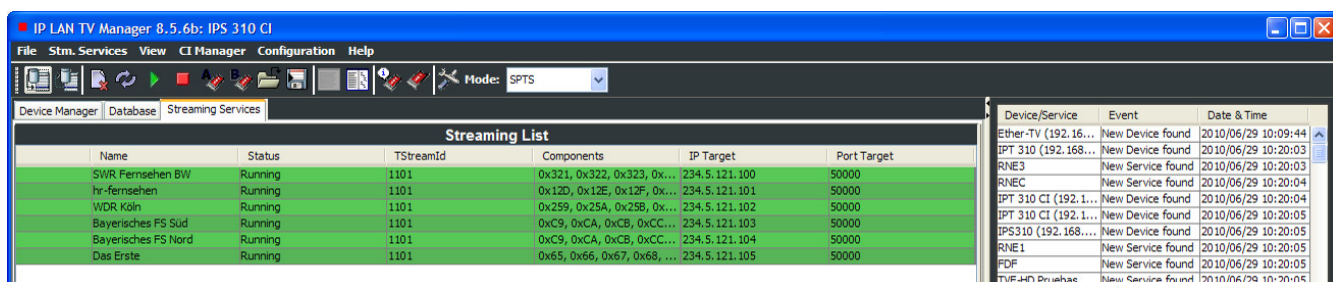
<http://www.ftemaximal.com/ingles/firmware.php>


1. In this address you will get a .Zip file that you will have to decompress in your PC.
2. Proceed to open IPLanTVManager program, if the configuration of the IP address is correct, the list of connected modules will appear, if it is not correct you will have to verify again the information of the IP address where your PC is connected.

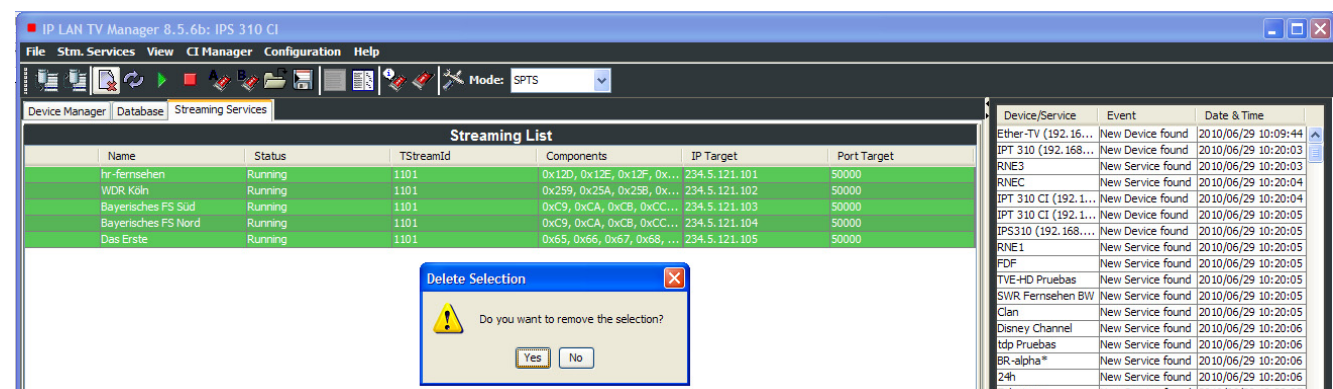
3. Next, select the module you wish to update and press “Connect” button ().





4. Save the current configuration of the module selecting the tab “Streaming Services” and pressing “Save stream configuration” button ().

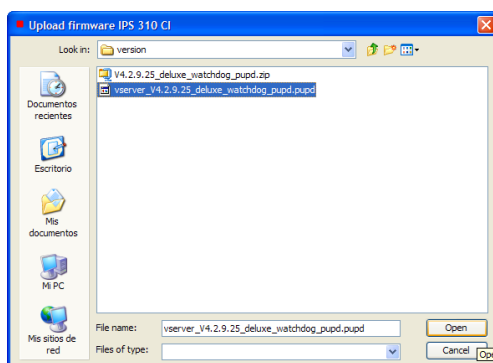


5. Delete all services of the module, selecting all the services and pressing “Delete Stream Service(s)” button (). Confirm the deleting of services pressing “Yes”.

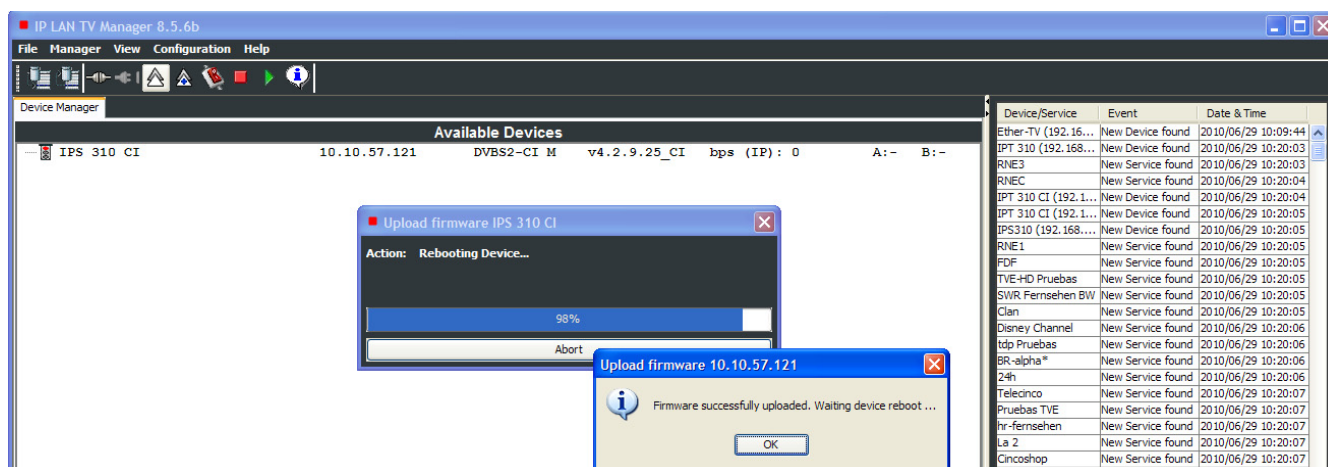


6. Disconnect the module selecting the tab “Device Manager”. Then select the module and press “Disconnect” button ().

7. With the module selected, Press “Device Manager” tab in task bar and select *Upload* function (). Then, the next window will be opened; here you have to select the updating file decompressed on *step 1* of this manual for the selected IP module. Once the updating file is selected press *Open* button.



8. Next, the module will start automatically updating itself. The updating process will last for seconds. Once the updating will be finished a new window will appear with the following message: "Updating correctly made. The system is rebooting..." Press *OK* and wait until IP module reboots itself automatically.



The moment the new IP module appears in the available modules list, verify that the software version has been updated.

9. Select the module and press "Connect" button (🔌). Open the "Streaming Services" tab and press "Load Streaming Configuration" button (📁) to charge the streaming services previously saved on *step 4*.

Follow these steps for all the modules you wish to update.

Note: If the updating is not correctly made or there is any mistake during the updating process, make a reset to the module before starting the updating process again.

Press the right button of the mouse over the IP module and select *Reset* option (🖱️). IP module will reboot and it will be ready to update it again in a few seconds.

